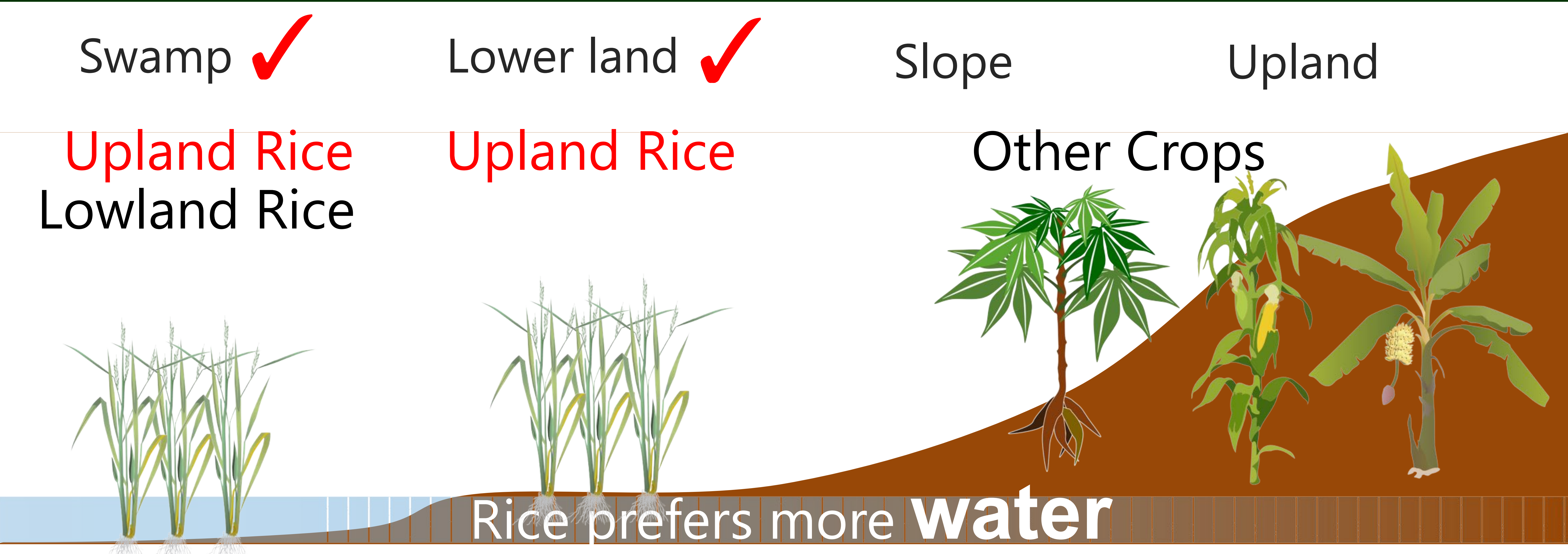
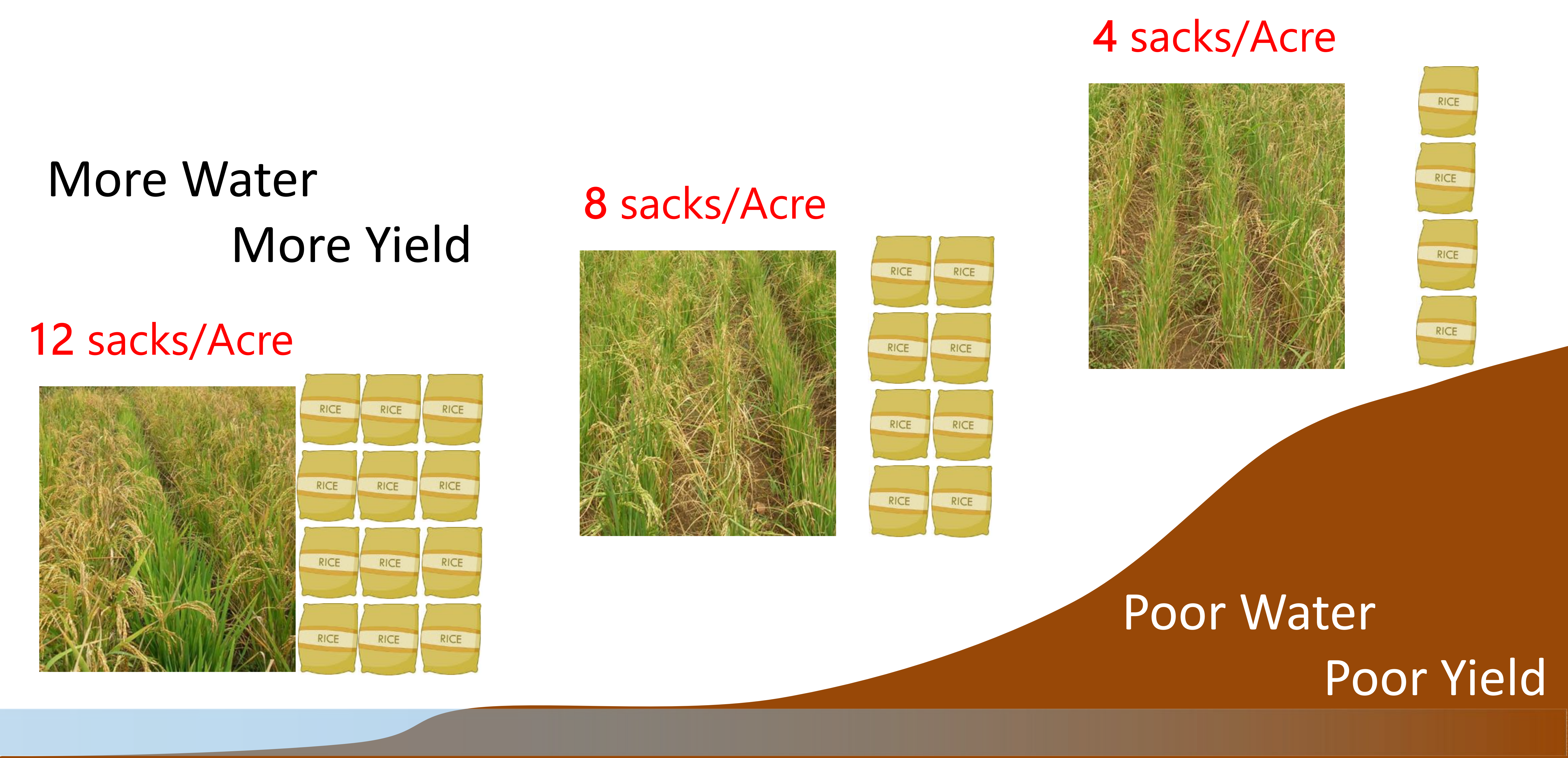


# Where do you grow rice?

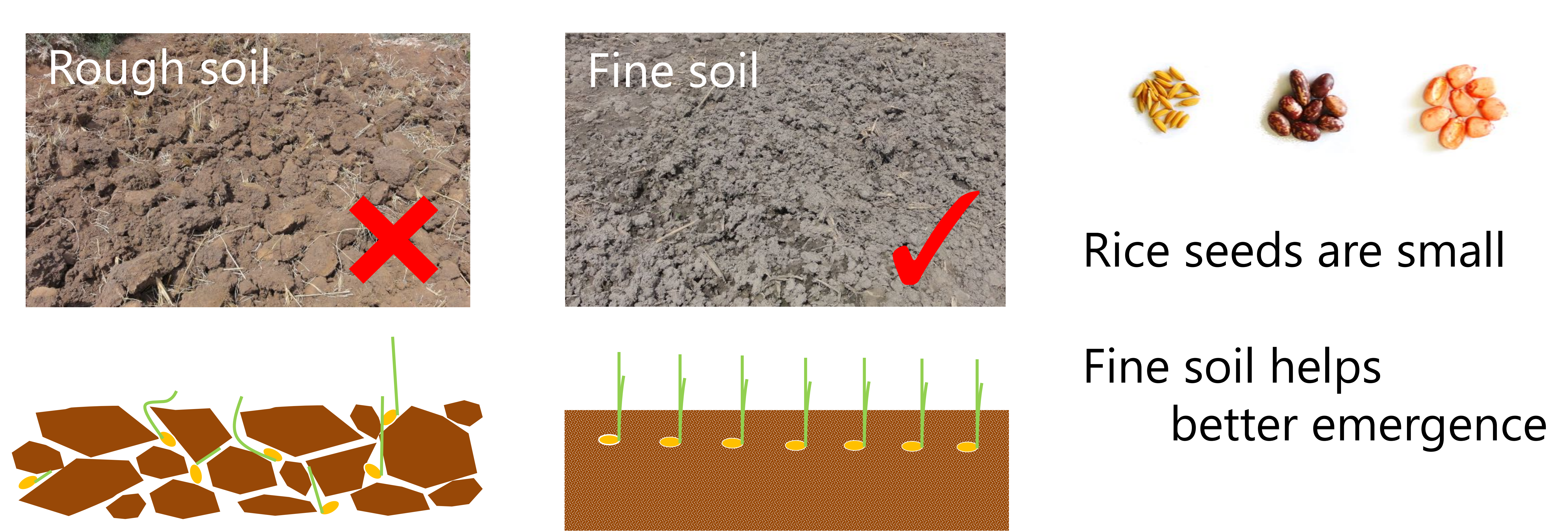
## 1. Site Selection



## 2. Yield difference by where to plant upland rice



## 3. Field Preparation





# Seed Multiplication

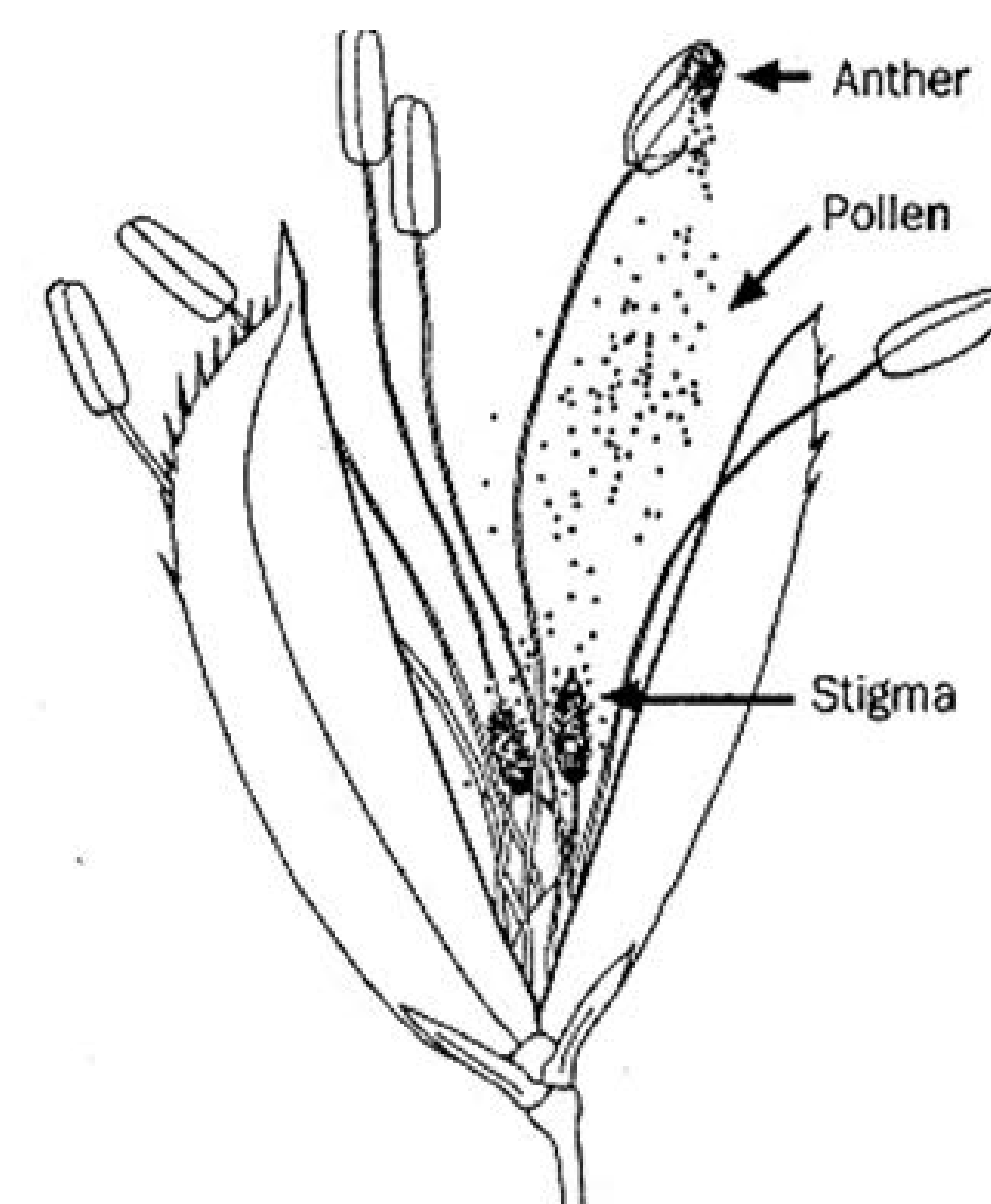
## 1. Rice seed can be produced by farmers

You **do not have to buy** rice seeds again & again

You can **keep the purity** of your rice seeds by your self



Rice Flower



Self Pollination

### 1<sup>st</sup> Season

1 kg of seed → plant in 200 m<sup>2</sup>  
**50 kg of seed can be harvested**

### 2<sup>nd</sup> season

50 kg of seed → plant in 2.5 Acre  
**2,500 kg of rice can be harvested**



200m<sup>2</sup>

## 1. How can we get pure seeds?

If seed is not pure...

1. Different maturity period → You cannot harvest once
2. Different grain size/shape → Milling recovery will be decreased

To keep rice seed purity

Step1. Select seed plot in your field (**100m<sup>2</sup> for next season 1 Acre**)

Step2. **Remove off-types** from seed plot

Grain production area

← Seed production area



Grain Color



Not Hairy



Hairy



Maturity Period



Fat

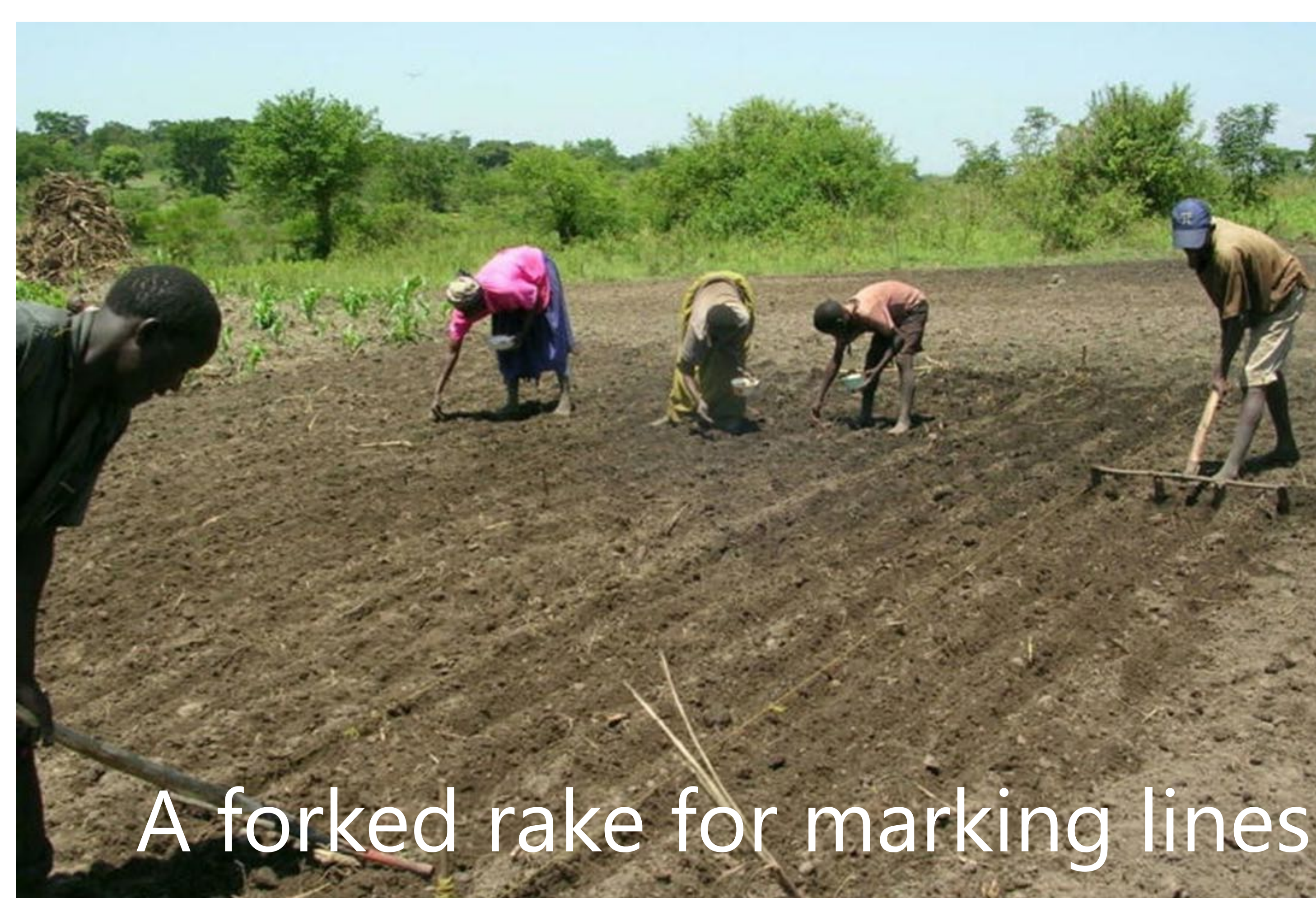
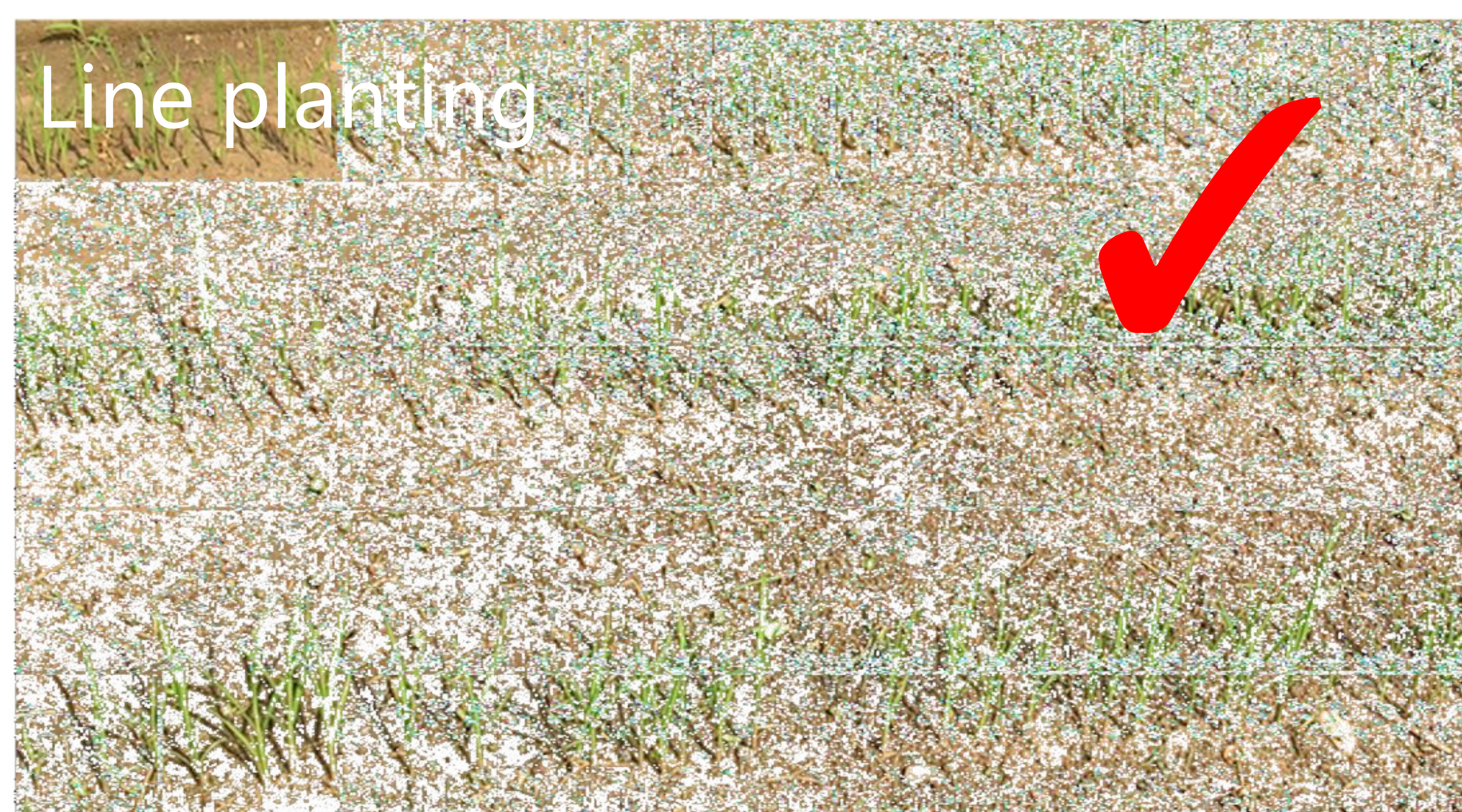


Slim

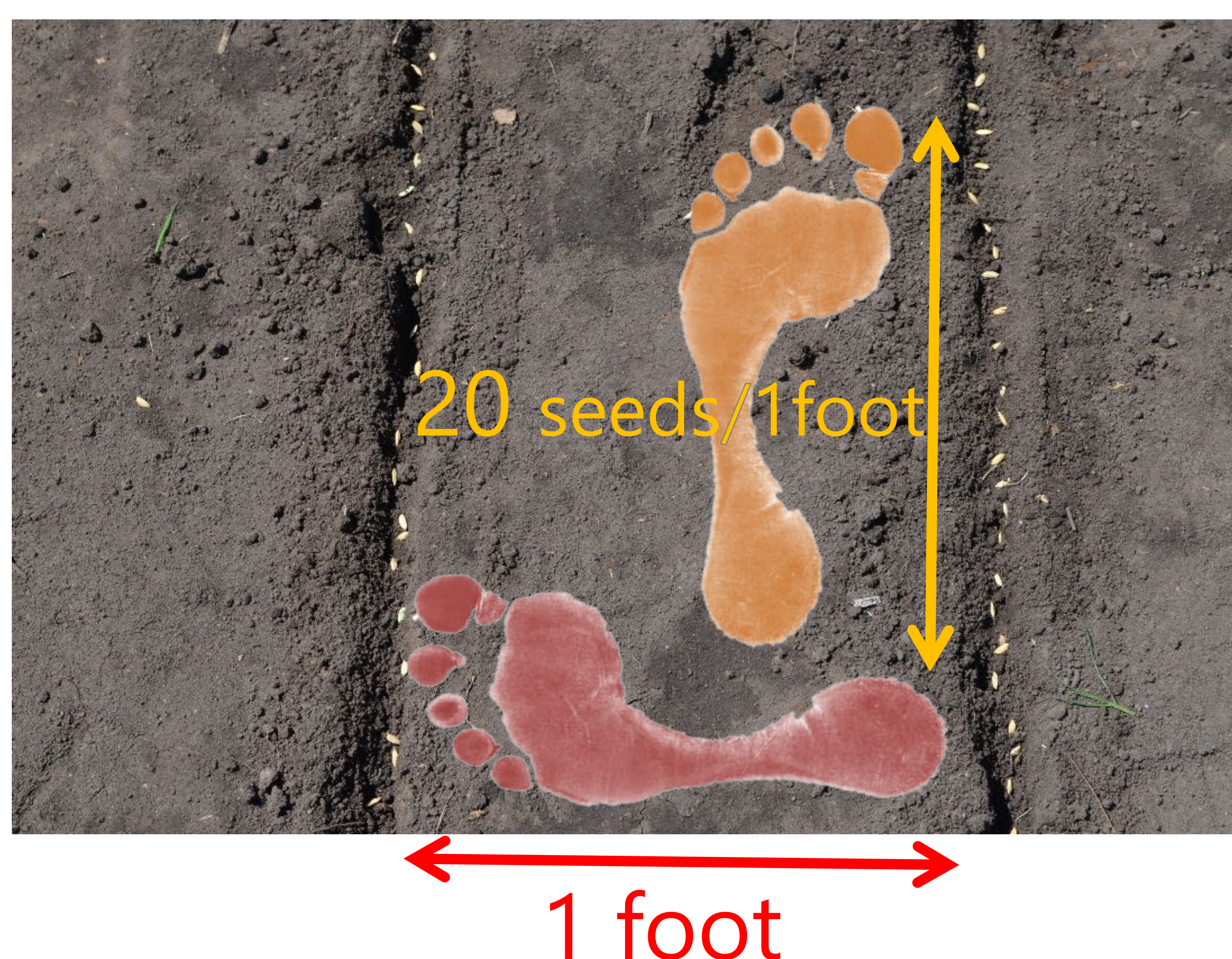


# How to sow rice seeds

## 1. Sowing Methods



## 2. Sowing space and depth



Between the lines = 30cm  $\approx$  1 foot  
In the line = 20 seeds/30cm(1 foot)  
20kg/acre is the optimum seed rate



0 - 2 cm = Birds attack, Drought  
2 - 4 cm = The optimum sowing depth  
4 - 5 cm = Poor Emergence



# Is weeding important?

## 1. Why do we have to weed?



These are 3 important factors for rice

Weeds steal sunshine, water & soil nutrition from Rice



Low rice yield = Less Income  
**Weeds are stealing your money**

## 2. When & How many times do we weed?

Weeding should be done at least **twice** at **3 & 6 weeks** after emergence



No Weeding



One Times (at 3 weeks)



Two Times (at 3 & 6 weeks)



Three Times (at 3, 6 & 9 weeks)

**More weeding** brings you more yield and **more income**



# Post harvest Handling

## 1. Harvest timing



Immature

Milling loss



Best

80-85% = straw color



Over stayed

Grain cracks, falls in the field  
Bird attack risk

## 2. Harvesting method & Threshing



Cutting bottom is recommended  
for easier threshing



Threshing machine can reduce  
threshing time & threshing losses



## 2. Harvesting method & Threshing



Low price

High price

Rice quality can be improved by farmers



Fermentation  
makes rice  
quality poor



Mixing different  
varieties gives  
you poor  
milling recovery



Thin

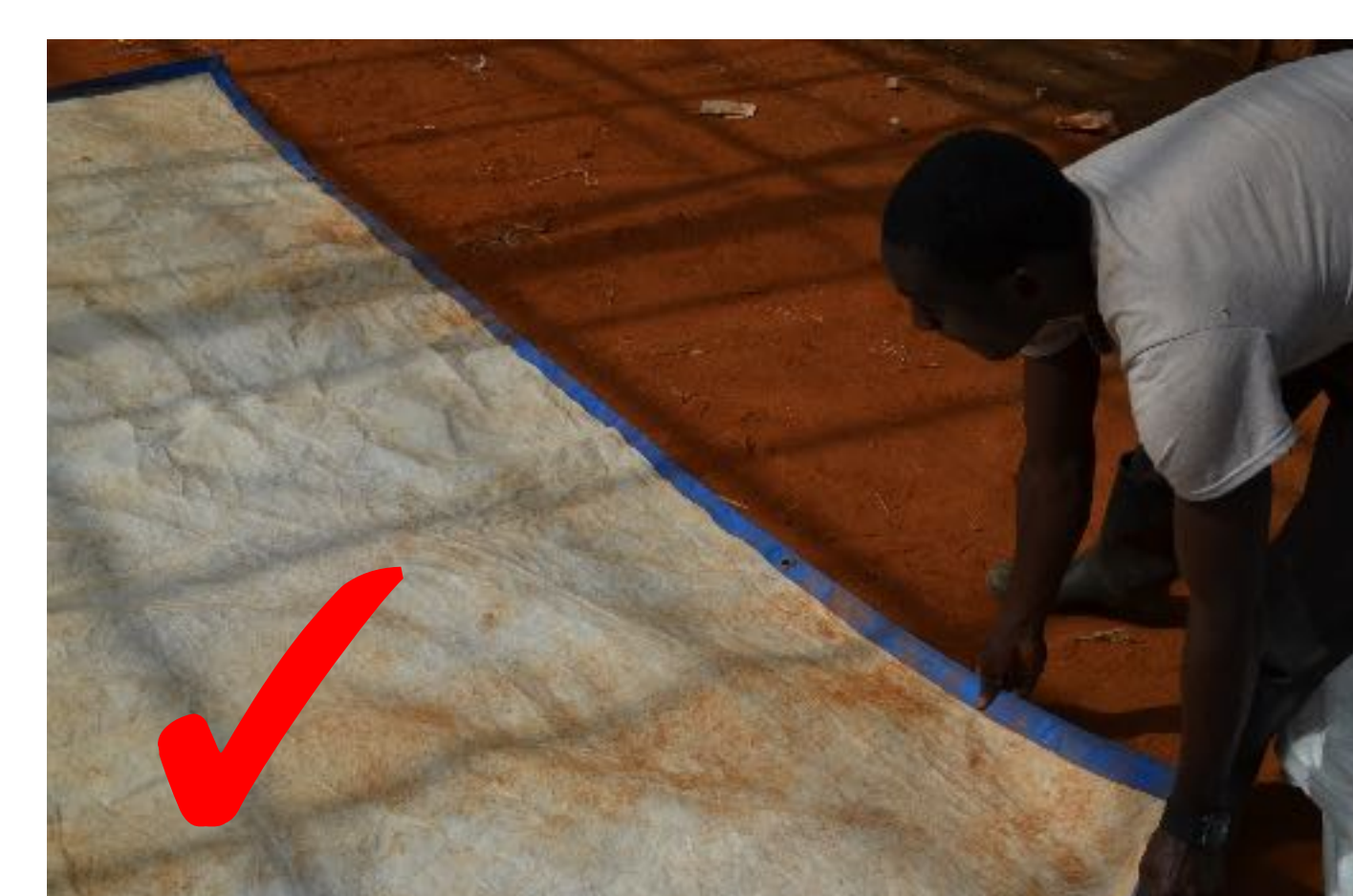


Thick

Drying **slowly** with thick layer and frequent agitation



Agitation



Let us use tarpaulin to avoid stones in rice